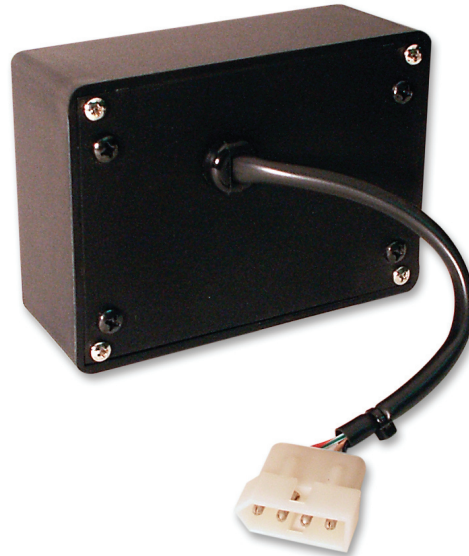


# Sigtronics Tone Module — STM

## Installation Instructions



### Sigtronics Tone Module Features

The Sigtronics Tone Module allows a tone to be heard in Sigtronics Intercom System Headsets. The tone is activated by a simple switch closure. It can be used for alarm tones or back up signaling.

### Sigtronics Equipment that may be used with STM

EAI Intercom  
UltraSound Intercom  
S.A.F.E. Communicator

Sigtronics Tone Module Model: **STM**

**Input Power:** 12 Volts DC

**Warranty:** Two years parts and labor.

Standard Equipment Included		
Part Description	Part Number	Quantity
Interface Cable	N/A	1
Hex Nut, 6-32, Locking	100067	4
Phillips Head Screw, 6-32 x 5/8, Black	100105	4

### Installation

Attach the Tone Module in a convenient location using the included hardware. Verify that the adapter unit and cable will not interfere with the normal operation of any vehicle controls or the operation of vehicle compartment doors.

The level of the tone in the intercom headsets is dependent on both the intercom volume setting as well as the individual headset volume control. Additionally, an internal level adjustment is provided on the side of the Tone Generator chassis.

Connect the wiring harness color-for-color to the Sigtronics intercom and vehicle power. See table below.

Connector Pinout			
Pin	Wire Color	Function	Connect To
1	Red	Power Input +	Vehicle Power +12VDC
2	White / Green	Signal Input	Tone Sensor or Switch *
3	Tan	Output to Intercom	Intercom Crew Mic Input Line ( Tan ) **
4	Black	Output to Intercom	Intercom Common Return Line ( Black )

### NOTES:

\* To output tone, switch Signal Input to ground. To stop tone, open Signal Input.

\*\* Connection to an unused headset position is preferred. However, it will also work connected to a used headset position.



Made in the U.S.A.

## Specialists in "SOUND" Management

178 East Arrow Highway, San Dimas, CA 91773 ( 909 ) 305-9399