

The headphone parts may be cleaned with mild soap and water using a soft cloth. Then dry immediately. **Caution: Do Not immerse** any part of the headphone in water or any other liquid. Exposure to moisture may cause internal corrosion and failure and will void your manufacturers warranty.

Cleaning will help the headphone maintain its "like new" condition for many years.

### WARRANTY

Your headphone is covered by a limited one-year parts and labor warranty. Please see the enclosed warranty card for details.

You may refer to the parts list on the reverse side, if you choose to replace parts yourself. The parts list describes parts for this particular headphone only. Parts lists for other models are available on our Web Site or can be obtained by contacting Sigtronics Corporation.



Sigtronics Corporation  
178 East Arrow Highway  
San Dimas, CA 91773  
**Phone:** 909 305-9399  
**E-mail:** info@sigtronics.com  
**Web Site:** www.sigtronics.com

## Model SEH-41 Headphone Instructions

The SEH-41 series of headphones are adjusted at the factory for immediate use with all Sigtronics emergency apparatus intercoms and radio adapters in emergency vehicles. The headphone is equipped with a single plug and a coiled cord.

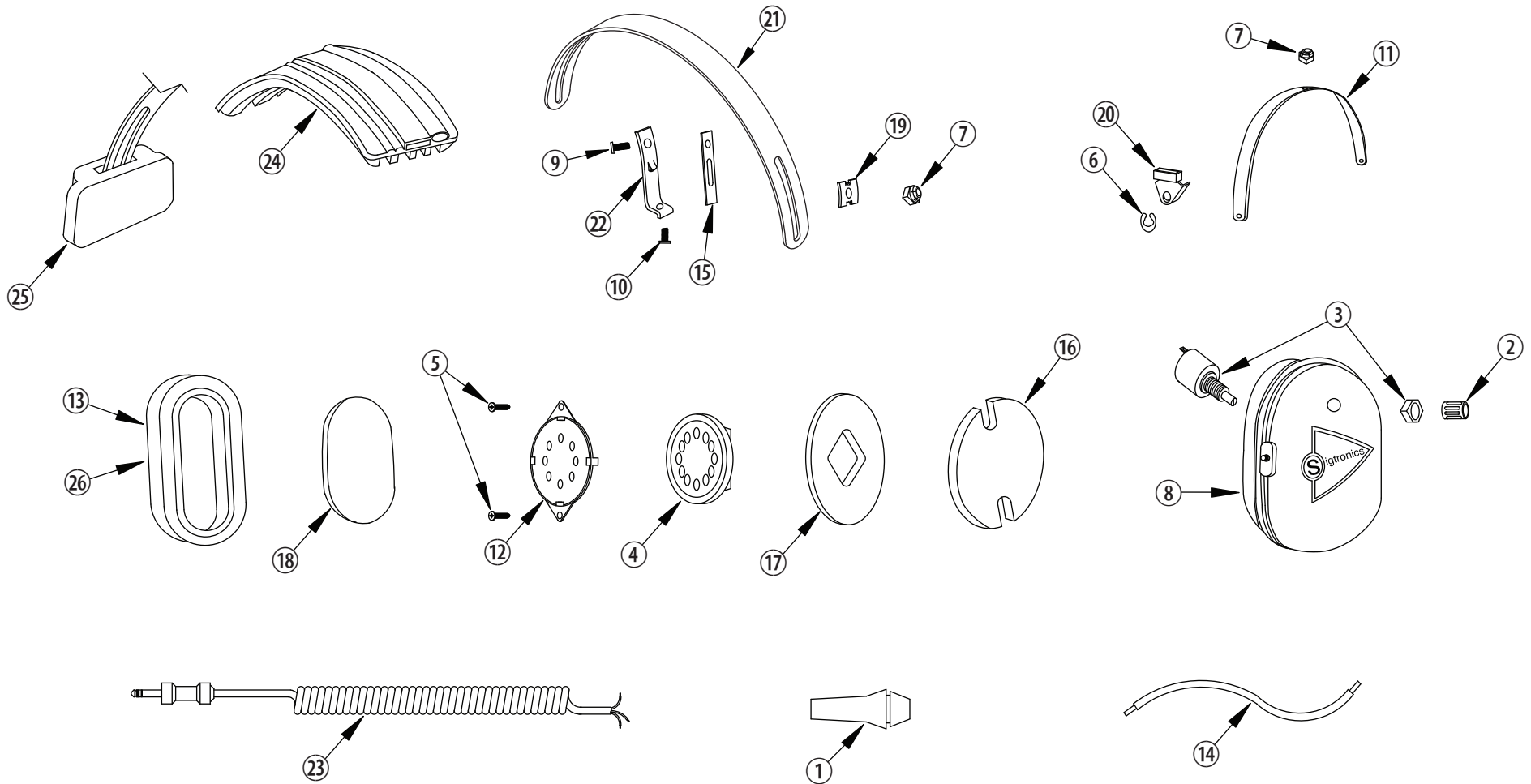
The headband is adjustable through a full range of motion, and the locking nuts may be tightened to allow you to custom fit the headphone. Place the headphone over your head and adjust the slides up until minimum pressure is felt on the top of your head. For maximum noise attenuation, the clamping pressure of the headband has been set at the factory. Releasing the clamping pressure by bending the headband is **not advised**, because loss of attenuation will result.

When you **first connect the headphone**, turn the volume control on the headphone up to the full clockwise position, then adjust the listening volume with the audio control of either your radio or intercom as appropriate. If applicable, crew members should also turn their individual headphone volumes up fully. Doing this allows for a full range of adjustment for each passenger, since those with the most acute hearing can turn their headphone volume down, if necessary.

continued on back...



**...when it counts!**



### SIGTRONICS SEH-41 HEADPHONE PARTS IDENTIFICATION BREAKDOWN

ITEM	P/N	DESCRIPTION	ITEM	P/N	DESCRIPTION	ITEM	P/N	DESCRIPTION
1	100568	STRAIN RELIEF, CABLE	10	100364	SCREW, 8-32 X 3/8, PHILLIPS HEAD	19	100258	CLIP, HEADBAND GUIDE, PLASTIC
2	100063	KNOB, 3/8 INCH, BLACK	11	100367	YOKE, EAR CUP MOUNT, METAL	20	100393	CLIP, ANTI-ROTATION, YOKE, PLASTIC
3	100077	POTENTIOMETER	12	100370	RECEIVER MOUNT, HEADSET	21	100257	HEADBAND, METAL, LARGE
4	100079	RECEIVER, 300 OHM, MONO	13	100369	EAR SEAL, FOAM FILLED	22	100384	BRACKET, YOKE SUPPORT WITH TANG
5	100108	SCREW, 4-40 X 1/4, THREAD FORMING	14	100221	WIRE, #22, 19 STRAND, 4 INCH	23	800035	CABLE, HEADSET, STEREO, COILED
6	100251	E-RING, EAR CUP TO YOKE RETAINER	15	100373	SLIDE, YOKE BRACKET, LONG, NYLON	24	800119	HEADBAND, WITH CUSHION, SE-41
7	100252	NUT, HEX, 8-32, LOCKING	16	100374	FOAM, SOUND ATTENUATING. NOTCHED, 1/2 INCH	25	800118	HEADPAD ASSEMBLY WITH CUSHION, SE-41
8	100361	EAR CUP, PRINTED AND DRILLED	17	100376	FOAM, SOUND ATTENUATING. RECEIVER HOLE, 1/2 INCH	26	100402	OPTIONAL - EAR SEAL, GEL FILLED
9	100363	SCREW, 8-32 X 1/2, PHILLIPS HEAD	18	100379	FOAM, SOUND ATTENUATING, RECEIVER COVER, 1/4 INCH			