

The headphone parts may be cleaned with mild soap and water using a soft cloth. Then dry immediately. **Caution: Do Not immerse** any part of the headphone in water or any other liquid. Exposure to moisture may cause internal corrosion and failure and will void your manufacturers warranty.

Cleaning will help the headphone maintain its "like new" condition for many years.

WARRANTY

Your headphone is covered by a limited one-year parts and labor warranty. Please see the enclosed warranty card for details.

You may refer to the parts list on the reverse side, if you choose to replace parts yourself. The parts list describes parts for this particular headphone only. Parts lists for other models are available on our Web Site or can be obtained by contacting Sigtronics Corporation.



Sigtronics Corporation
178 East Arrow Highway
San Dimas, CA 91773
Phone: 909 305-9399
E-mail: info@sigtronics.com
Web Site: www.sigtronics.com

Model SEH-2S Headphone Instructions

The SEH-2S series of headphones are adjusted at the factory for immediate use with all Sigtronics emergency apparatus intercoms and radio adapters in emergency vehicles. The headphone is equipped with a single plug and a coiled cord.

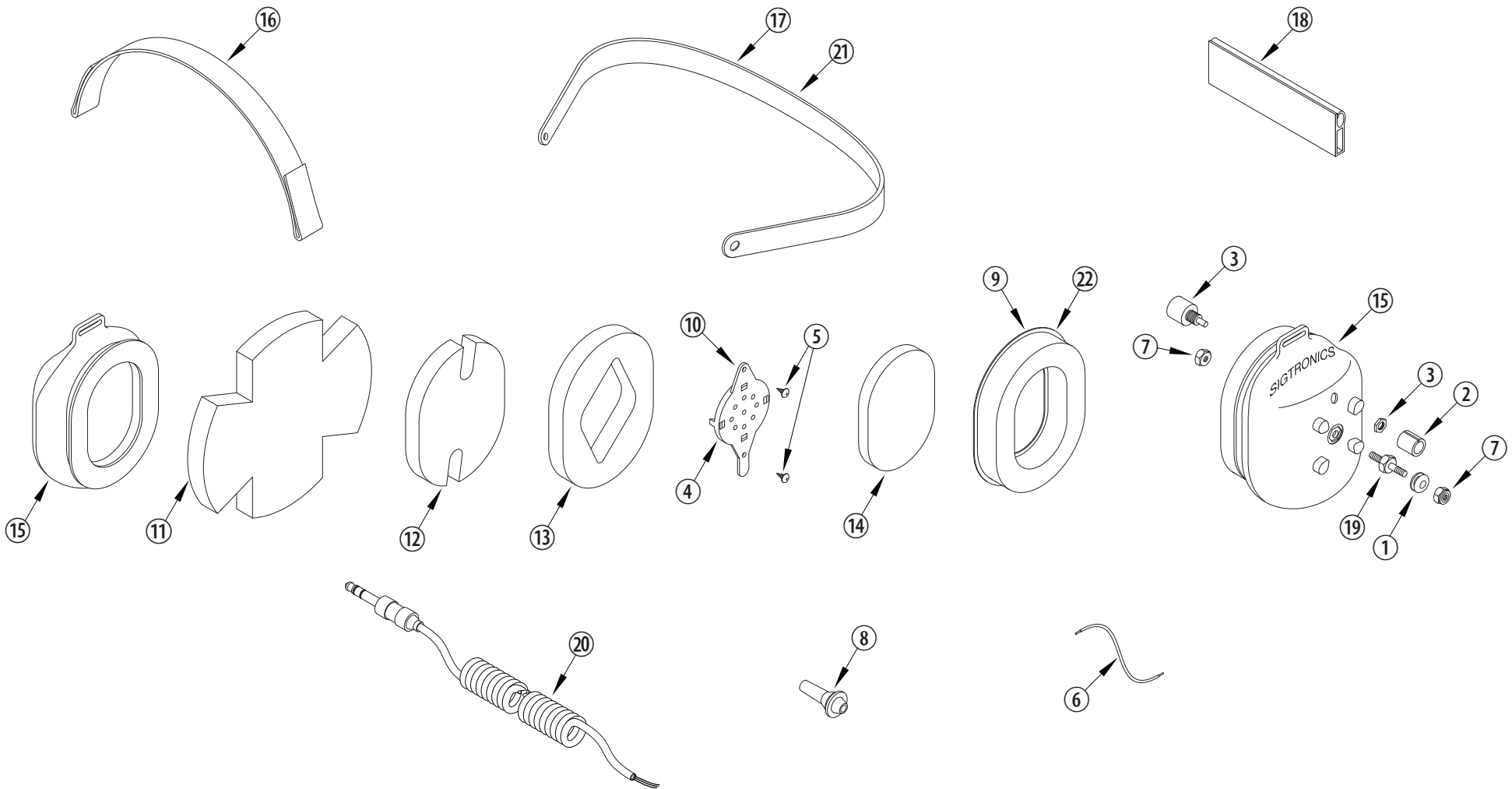
The head strap is adjustable so you may custom fit the headphone. Place the headphone over your head and adjust the strap until minimum pressure is felt on the top of your head. For maximum noise attenuation, the clamping pressure of the headband has been set at the factory. Releasing the clamping pressure by bending the headband is **not advised**, because loss of attenuation will result.

When you **first connect the headphone**, turn the volume control on the headphone up to the full clockwise position, then adjust the listening volume with the audio control of either your radio or intercom as appropriate. If applicable, crew members should also turn their individual headphone volumes up fully. Doing this allows for a full range of adjustment for each passenger, since those with the most acute hearing can turn their headphone volume down, if necessary.

continued on back...



...when it counts!



SIGTRONICS SEH-2S HEADPHONE PARTS IDENTIFICATION BREAKDOWN

| ITEM | P/N | DESCRIPTION | ITEM | P/N | DESCRIPTION | ITEM | P/N | DESCRIPTION |
|------|--------|-----------------------------------|------|--------|---|------|--------|---|
| 1 | 100567 | GROMMET, SE-2 STUD | 9 | 100369 | EAR SEAL, FOAM FILLED | 17 | 800220 | HEADBAND, METAL, BLACK, WITH GROMMETS, SE-2 |
| 2 | 100063 | KNOB, 3/8 INCH, BLACK, VOLUME | 10 | 100370 | RECEIVER MOUNT, HEADSET | 18 | 100413 | HEADBAND EXTRUSION, 4 IN., SE-2 |
| 3 | 100077 | POTENTIOMETER | 11 | 100684 | FOAM, SOUND ATTENUATING, FOR SLOTTED EAR CUP ONLY | 19 | 100451 | STUD, SE-2, EAR CUP TO BAND MOUNT |
| 4 | 100079 | RECEIVER, 300 OHM, MONO | 12 | 100374 | FOAM, SOUND ATTENUATING. NOTCHED, 1/2 INCH | 20 | 800035 | CABLE, HEADSET, STEREO, COILED |
| 5 | 100108 | SCREW, 4-40 X 1/4, THREAD FORMING | 13 | 100376 | FOAM, SOUND ATTENUATING. RECEIVER HOLE, 1/2 INCH | 21 | 100675 | OPTIONAL - HEADBAND, METAL, BLACK, LARGE |
| 6 | 100221 | WIRE, #22, 19 STRAND, 4 INCH | 14 | 100379 | FOAM, SOUND ATTENUATING, RECEIVER COVER, 1/4 INCH | 22 | 100402 | OPTIONAL - EAR SEAL, GEL FILLED |
| 7 | 100252 | NUT, HEX, 8-32, LOCKING | 15 | 100409 | EAR CUP, PRINTED AND DRILLED, MIC & NON MIC SIDE | | | |
| 8 | 100568 | STRAIN RELIEF, CABLE | 16 | 100411 | STRAP, HEADSET, SE-2, BLACK | | | |