

The headset parts may be cleaned with mild soap and water using a soft cloth. Then dry immediately. **Caution: Do Not immerse** any part of the headset in water or any other liquid. Be especially careful not to allow the microphone to become wet! Exposure to moisture may cause internal corrosion and failure and will void your manufacturers warranty.

Cleaning will help the headset maintain its "like new" condition for many years.

WINDSCREEN

The microphone windscreen will reduce annoying wind noise and breath pops picked up by headset microphones. It also protects the microphone element from dirt and moisture. The windscreen should be washed regularly to maintain hygiene and avoid clogging. Wash in warm water and mild soap. Rinse thoroughly and make sure it is completely dry before putting it back on.

To remove the windscreen, carefully grasp the windscreen lightly along its entire length and remove from the microphone element being careful not to twist the element itself.

Put the windscreen on the microphone by gently pulling from the open end. Do not pull it so tightly that it stretches against the end of the microphone.

WARRANTY

Your headset is covered by a limited one-year parts and labor warranty. Please see the enclosed warranty card for details.

You may refer to the parts list on the reverse side, if you choose to replace parts yourself. The parts list describes parts for this particular headset only. Parts lists for other models are available on our Web Site or can be obtained by contacting Sigtronics Corporation.



Sigtronics Corporation
178 East Arrow Highway
San Dimas, CA 91773
Phone: 909 305-9399
E-mail: info@sigtronics.com
Web Site: www.sigtronics.com

Model SE-8ST Headset Instructions

The SE-8ST series headset is adjusted at the factory for immediate use with all Sigtronics emergency apparatus intercoms and radio adapters in emergency vehicles. The headset is equipped with a single plug and a coiled cord.

The head strap is adjustable so you may custom fit the headset. Place the headset over your head and adjust the strap until minimum pressure is felt on the top of your head. For maximum noise attenuation, the clamping pressure of the headband has been set at the factory. Releasing the clamping pressure by bending the headband is **not advised**, because loss of attenuation will result.

The microphone boom is fully adjustable and will rotate 180 degrees for use on the left or right side of the head.

Make sure you are speaking into the side of the mic labeled "Talk" or substantial loss of gain will occur. Microphone placement should be at the corner of the mouth, approximately ¼" from the lips.

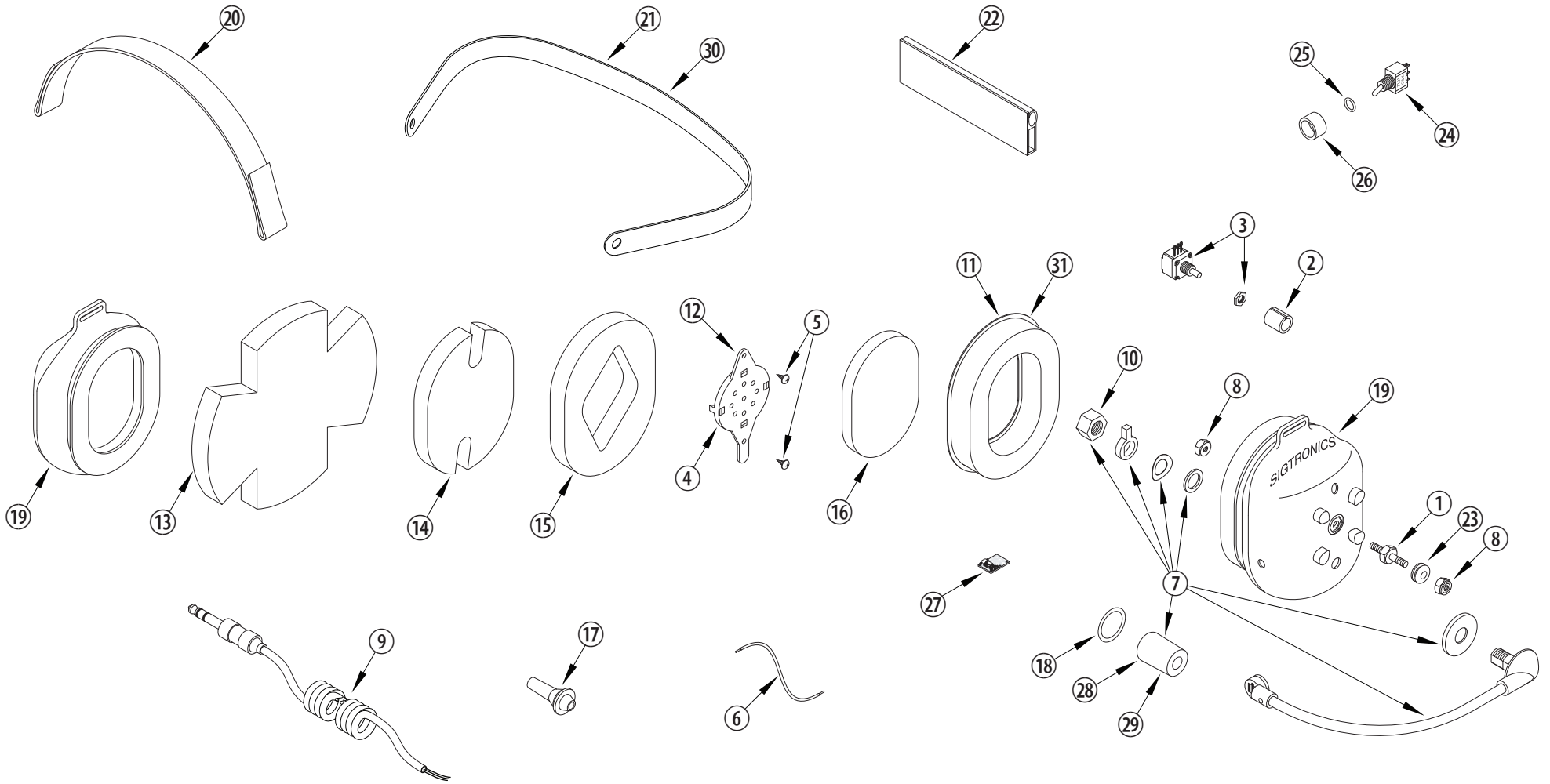
Your SE-8ST headset has a mic disconnect switch located on the mic side ear cup. The microphone is operative only when the switch is in the up (on) position. Headphone and volume control functions are operative at all times.

When you **first connect the headset**, turn the volume control on the headset up to the full clockwise position, then adjust the listening volume with the audio control of either your radio or intercom as appropriate. If applicable, crew members should also turn their individual headset volumes up fully. Doing this allows for a full range of adjustment for each passenger, since those with the most acute hearing can turn their headset volume down, if necessary.

continued on back...



...when it counts!



SIGTRONICS SE-8ST HEADSET PARTS IDENTIFICATION BREAKDOWN

| ITEM | P/N | DESCRIPTION | ITEM | P/N | DESCRIPTION | ITEM | P/N | DESCRIPTION |
|------|--------|-------------------------------------|------|--------|---|------|--------|--|
| 1 | 100451 | STUD, SE-8, EAR CUP TO BAND MOUNT | 12 | 100370 | RECEIVER MOUNT, HEADSET | 23 | 100567 | GROMMET, SE-8 STUD |
| 2 | 100063 | KNOB, 3/8 INCH, BLACK, VOLUME | 13 | 100684 | FOAM, SOUND ATTENUATING, FOR SLOTTED EAR CUP ONLY | 24 | 100427 | SWITCH, SPDT, TOGGLE |
| 3 | 100077 | POTENTIOMETER | 14 | 100374 | FOAM, SOUND ATTENUATING. NOTCHED, 1/2 INCH | 25 | 100625 | O-RING, PTT, HEADSET |
| 4 | 100079 | RECEIVER, 300 OHM, MONO | 15 | 100376 | FOAM, SOUND ATTENUATING. RECEIVER HOLE, 1/2 INCH | 26 | 100428 | SWITCHGUARD, PTT, BLACK |
| 5 | 100108 | SCREW, 4-40 X 1/4, THREAD FORMING | 16 | 100379 | FOAM, SOUND ATTENUATING, RECEIVER COVER, 1/4 INCH | 27 | 800192 | PREAMP |
| 6 | 100221 | WIRE, #22, 19 STRAND, 4 INCH | 17 | 100568 | STRAIN RELIEF, CABLE | 28 | 900111 | WINDSCREEN, MICROPHONE, FOAM, PACKAGED |
| 7 | 800193 | MICROPHONE & FLEX BOOM ASSEMBLY | 18 | 100612 | O-RING, WINDSCREEN RETAINER, SE-8 | 29 | 100611 | WINDSCREEN, MICROPHONE, FOAM, BULK |
| 8 | 100252 | NUT, HEX, 8-32, LOCKING | 19 | 100409 | EAR CUP, PRINTED AND DRILLED, MIC & NON MIC SIDE | 30 | 100675 | OPTIONAL - HEADBAND, METAL, BLACK, LARGE |
| 9 | 800035 | CABLE, HEADSET, STEREO, COILED | 20 | 100411 | STRAP, HEADSET, SE-8, BLACK | 31 | 100402 | OPTIONAL - EAR SEAL, GEL FILLED |
| 10 | 100597 | NUT, HEX, 3/8-24, FLEX BOOM ADAPTER | 21 | 800220 | HEADBAND, METAL, BLACK, WITH GROMMETS, SE-8 | | | |
| 11 | 100369 | EAR SEAL, FOAM FILLED | 22 | 100607 | HEADBAND EXTRUSION, 4 IN., SE-8 | | | |