

The headset parts may be cleaned with mild soap and water using a soft cloth. Then dry immediately. **Caution: Do Not immerse** any part of the headset in water or any other liquid. Be especially careful not to allow the microphone to become wet! Exposure to moisture may cause internal corrosion and failure and will void your manufacturers warranty.

Cleaning will help the headset maintain its "like new" condition for many years.

WINDSCREEN

The microphone windscreen will reduce annoying wind noise and breath pops picked up by headset microphones. It also protects the microphone element from dirt and moisture. The windscreen should be washed regularly to maintain hygiene and avoid clogging. Wash in warm water and mild soap. Rinse thoroughly and make sure it is completely dry before putting it back on.

To remove the windscreen, take out the screw that holds the microphone on the boom and grasp the windscreen lightly along its entire length and slip it off.

Put the windscreen on the microphone by gently pulling from the open end. Do not pull it so tightly that it stretches against the end of the microphone.

WARRANTY

Your headset is covered by a limited one-year parts and labor warranty. Please see the enclosed warranty card for details.

You may refer to the parts list on the reverse side, if you choose to replace parts yourself. The parts list describes parts for this particular headset only. Parts lists for other models are available on our Web Site or can be obtained by contacting Sigtronics Corporation.



Sigtronics Corporation
178 East Arrow Highway
San Dimas, CA 91773
Phone: 909 305-9399
E-mail: info@sigtronics.com
Web Site: www.sigtronics.com

Model SE-41P Headset Instructions

The SE-41P series headset is adjusted at the factory for immediate use. The headset is equipped with a single plug and a coiled cord.

The headband is adjustable through a full range of motion, and the locking nuts may be tightened to allow you to custom fit the headphone. Place the headphone over your head and adjust the slides up until minimum pressure is felt on the top of your head. For maximum noise attenuation, the clamping pressure of the headband has been set at the factory. Releasing the clamping pressure by bending the headband is **not advised**, because loss of attenuation will result.

The microphone boom is fully adjustable and will rotate 180 degrees for use on the left or right side of the head. The locking screw that secures the boom to the ear cup is factory set to insure the correct tension. Turning it will not change the tension, because the nut on the inside of the cup will turn as well.

Microphone placement should be at the corner of the mouth, approximately ¼" from the lips. The exclusive thumb screw on the mic boom may be used to assure proper placement.

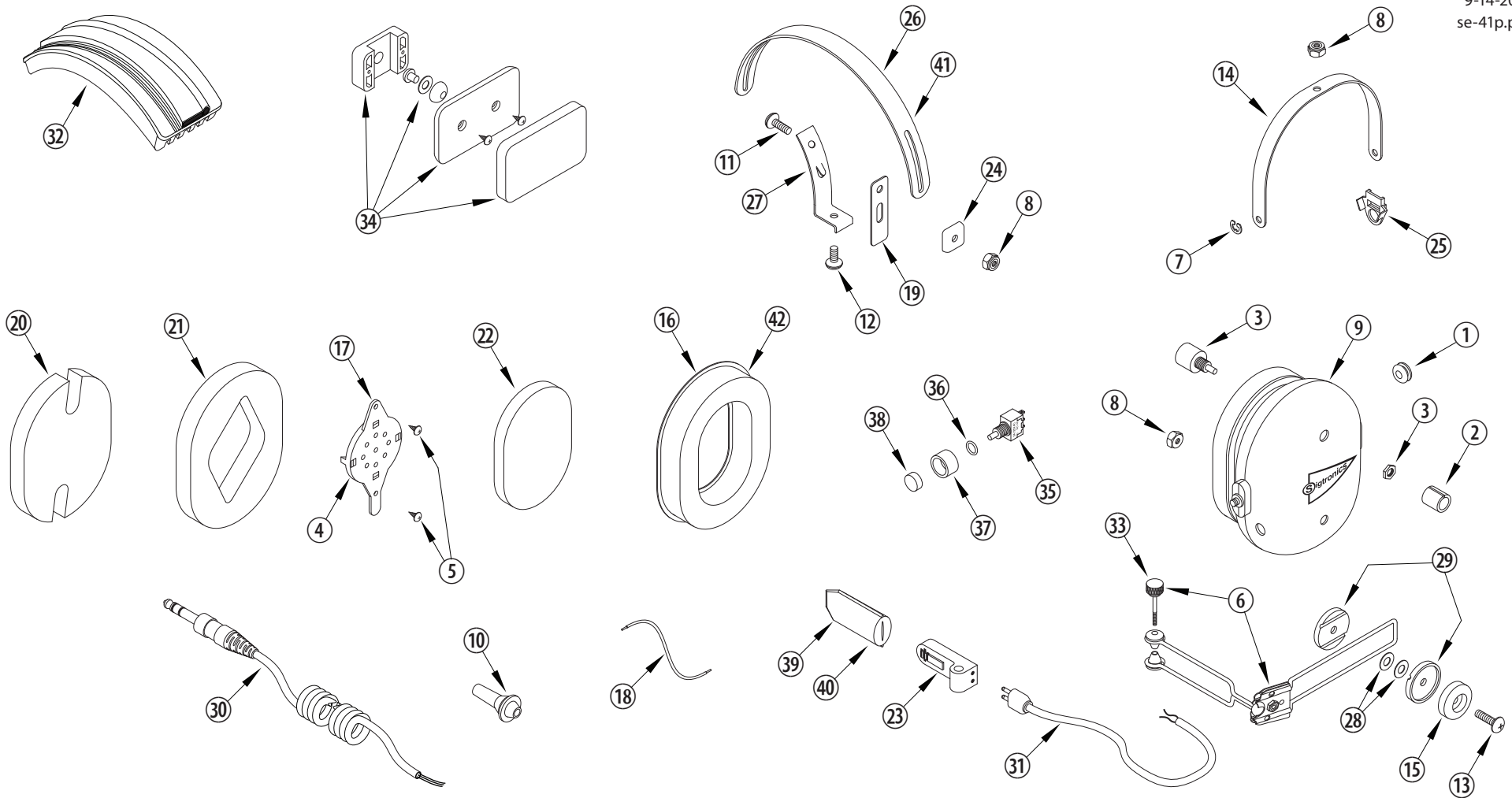
Your SE-41P headset has a push to talk switch located on the mic side ear cup. The mic is operative only when the switch is depressed. For intercom and radio function, depress the switch to talk.

When you **first connect the headset**, turn the volume control on the headset up to the full clockwise position, then adjust the listening volume with the audio control of either your radio or intercom as appropriate. If applicable, crew members should also turn their individual headset volumes up fully. Doing this allows for a full range of adjustment for each passenger, since those with the most acute hearing can turn their headset volume down, if necessary.



...when it counts!

continued on back...



SIGTRONICS SE-41P HEADSET PARTS IDENTIFICATION BREAKDOWN

ITEM	P/N	DESCRIPTION	ITEM	P/N	DESCRIPTION	ITEM	P/N	DESCRIPTION
1	100049	GROMMET, 5/16 INCH, RUBBER	15	100368	KNOB, MICROPHONE BOOM ADAPTER, PLASTIC	29	100408	WASHER, GROOVED BOOM
2	100063	KNOB, 3/8 INCH, BLACK	16	100369	EAR SEAL, FOAM FILLED	30	800035	CABLE, HEADSET, STEREO, COILED
3	100077	POTENTIOMETER	17	100370	RECEIVER MOUNT, HEADSET	31	800039	CABLE, MICROPHONE BOOM, 12 INCH
4	100079	RECEIVER, 300 OHM, MONO	18	100221	WIRE, #22, 19 STRAND, 4 INCH	32	800119	HEADBAND, WITH CUSHION, SE-41
5	100108	SCREW, 4 X 1/4, THREAD FORMING	19	100373	SLIDE, YOKE BRACKET, LONG, NYLON	33	100156	SCREW, THUMB, MICROPHONE BOOM, 2-56 X 1
6	100249	BOOM, ELECTRET MICROPHONE SUPPORT, SWIVEL	20	100374	FOAM, SOUND ATTENUATING. NOTCHED, 1/2 INCH	34	800118	HEADPAD ASSEMBLY WITH CUSHION, SE-41
7	100251	E-RING, EAR CUP TO YOKE RETAINER	21	100376	FOAM, SOUND ATTENUATING. RECEIVER HOLE, 1/2 INCH	35	100232	SWITCH, SPDT, MOMENTARY
8	100252	NUT, HEX, 8-32, LOCKING	22	100379	FOAM, SOUND ATTENUATING, RECEIVER COVER, 1/4 INCH	36	100625	O-RING, PTT, HEADSET
9	100361	EAR CUP, PRINTED AND DRILLED, MIC SIDE	23	800082	MICROPHONE, ELECTRET, M-80	37	100428	SWITCHGUARD, PTT, BLACK
10	100568	STRAIN RELIEF, CABLE	24	100258	CLIP, HEADBAND GUIDE, PLASTIC	38	100317	BUTTON, SWITCH, PTT, RED
11	100363	SCREW, 8-32 X 1/2, PHILLIPS HEAD	25	100393	CLIP, ANTI-ROTATION, YOKE, PLASTIC	39	900084	WINDSCREEN, MICROPHONE, FOAM, PACKAGED
12	100364	SCREW, 8-32 X 3/8, PHILLIPS HEAD	26	100613	HEADBAND, METAL, LARGE, BLACK	40	100415	WINDSCREEN, MICROPHONE, FOAM, BULK
13	100377	SCREW, 8-32 X 5/8, PHILLIPS HEAD	27	100604	BRACKET, YOKE SUPPORT WITH TANG, BLACK	41	100602	OPTIONAL - HEADBAND, METAL, STANDARD, BLACK
14	100603	YOKE, EAR CUP MOUNT, METAL, BLACK	28	100385	WASHER, SPRING, BOOM ADAPTER	42	100402	OPTIONAL - EAR SEAL, GEL FILLED