

The headphone parts may be cleaned with mild soap and water using a soft cloth. Then dry immediately. **Caution: Do Not immerse** any part of the headphone in water or any other liquid. Exposure to moisture may cause internal corrosion and failure and will void your manufacturers warranty.

Cleaning will help the headphone maintain its "like new" condition for many years.

WARRANTY

Your headphone is covered by a limited three-year parts and labor warranty. Please see the enclosed warranty card for details.

You may refer to the parts list on the reverse side, if you choose to replace parts yourself. The parts list describes parts for this particular headphone only. Parts lists for other models are available on our Web Site or can be obtained by contacting Sigtronics Corporation.



Sigtronics Corporation
178 East Arrow Highway
San Dimas, CA 91773
Phone: 909 305-9399
E-mail: info@sigtronics.com
Web Site: www.sigtronics.com

Model SH-40 Headphone Instructions

The SH-40 series headphones are adjusted at the factory for immediate use with all current standard radio systems in general aviation aircraft. SH-40 headphones are equipped with one plug in the standard configuration. The headphone plug is a large diameter plug and should be inserted into the headphone jack (.250" standard monaural jack).

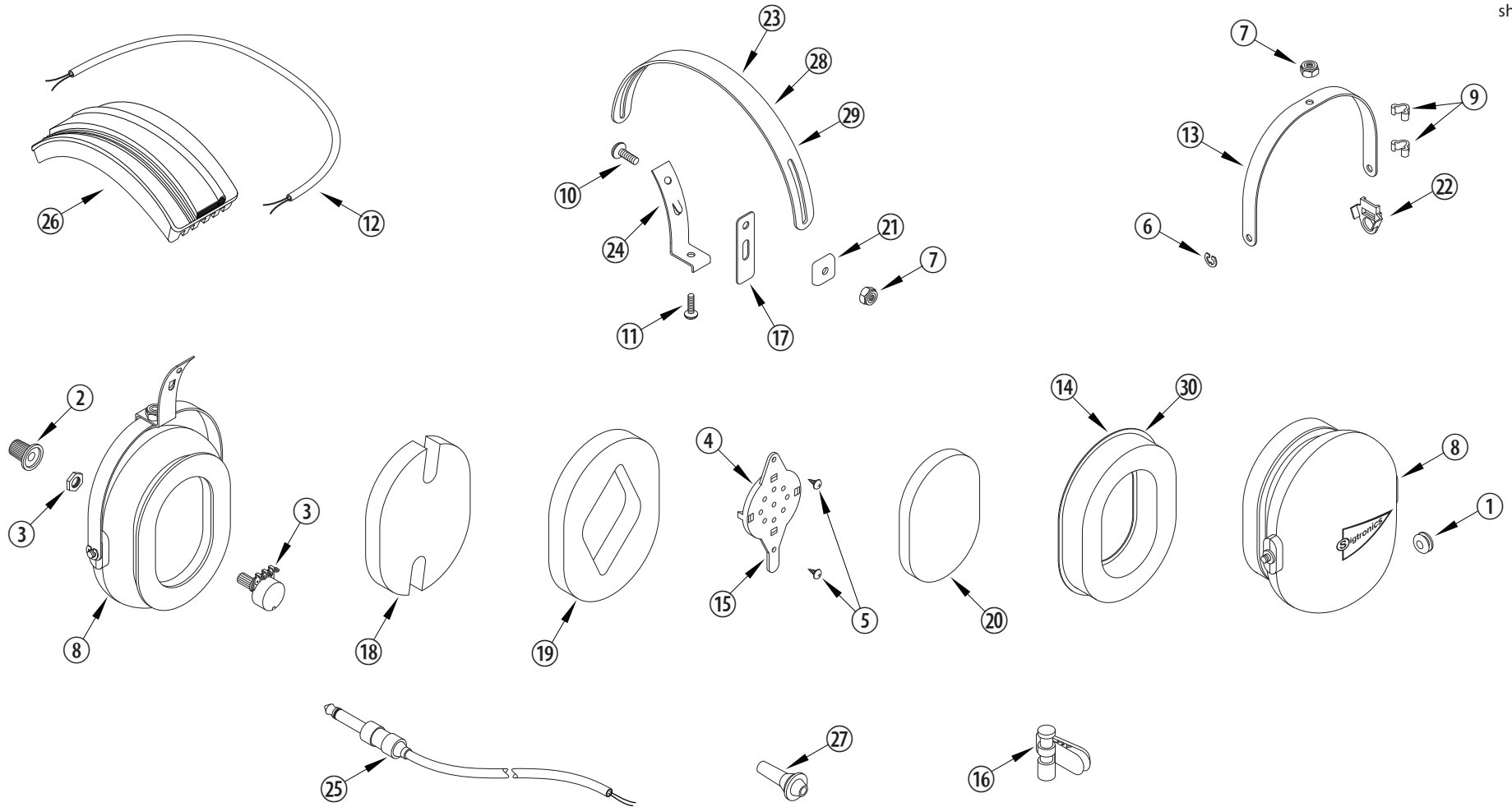
The headband is adjustable through a full range of motion, or the locking nuts may be tightened to allow you to custom fit the headphone. Place the headphone over your head, adjust the slides up until minimum pressure is felt on the top of your head. The headphone is now properly adjusted. For maximum noise attenuation, the clamping pressure has been set at the factory. Releasing the clamping pressure by bending the headband is not advised, because loss of attenuation will result. **Note:** If especially small (children) or large headbands are needed, they may be ordered from Sigtronics.

When you first connect the headphone, turn the volume control on the headphone up to the full clockwise position, then adjust the listening volume with the audio control of either your radio or intercom as appropriate. Passengers should also turn their individual headphone volumes up fully. Doing this allows for a full range of adjustment for each passenger, since those with the most acute hearing can turn their headphone volume down, if necessary.

continued on back...



...when it counts!



SIGTRONICS SH-40 HEADPHONE PARTS IDENTIFICATION BREAKDOWN

ITEM	P/N	DESCRIPTION	ITEM	P/N	DESCRIPTION	ITEM	P/N	DESCRIPTION
1	100049	GROMMET, 5/16 INCH, RUBBER	11	100364	SCREW, 8-32 X 3/8, PHILLIPS HEAD	21	100258	CLIP, HEADBAND GUIDE, PLASTIC
2	100360	KNOB, BLACK, VOLUME	12	100366	WIRE, 2 CONDUCTOR, #24, BLACK, 28 INCHES	22	100393	CLIP, ANTI-ROTATION, YOKE, PLASTIC
3	100365	POTENTIOMETER, 2K	13	100367	YOKE, EAR CUP MOUNT, METAL	23	100383	HEADBAND, METAL, STANDARD
4	100079	RECEIVER, 300 OHM, MONO	14	100369	EAR SEAL, FOAM FILLED	24	100384	BRACKET, YOKE SUPPORT WITH TANG
5	100108	SCREW, 4 X 1/4, THREAD FORMING	15	100370	RECEIVER MOUNT, HEADSET	25	800011	CABLE, HEADPHONE, MONAURAL
6	100251	E-RING, EAR CUP TO YOKE RETAINER	16	100579	CLIP, CLOTHING, HEADSET CABLE	26	800145	HEADBAND, WITH CUSHION, S-40
7	100252	NUT, HEX, 8-32, LOCKING	17	100373	SLIDE, YOKE BRACKET, LONG, NYLON	27	100568	STRAIN RELIEF, CABLE
8	100401	EAR CUP, PRINTED AND DRILLED, VOL. & NON VOL. SIDE	18	100374	FOAM, SOUND ATTENUATING. NOTCHED, 1/2 INCH	28	100257	OPTIONAL - HEADBAND, METAL, LARGE
9	100362	CLIP, CROSS-OVER, WIRE, PLASTIC	19	100376	FOAM, SOUND ATTENUATING. RECEIVER HOLE, 1/2 INCH	29	100618	OPTIONAL - HEADBAND, METAL, YOUTH
10	100363	SCREW, 8-32 X 1/2, PHILLIPS HEAD	20	100379	FOAM, SOUND ATTENUATING, RECEIVER COVER, 1/4 INCH	30	100402	OPTIONAL - EAR SEAL, GEL FILLED