

The headset parts may be cleaned with mild soap and water using a soft cloth. Then dry immediately. **Caution: Do Not immerse** any part of the headset in water or any other liquid. Be especially careful not to allow the microphone to become wet! Exposure to moisture may cause internal corrosion and failure and will void your manufacturers warranty.

Cleaning will help the headset maintain its "like new" condition for many years.

### WINDSCREEN

The microphone windscreen will reduce annoying wind noise and breath pops picked up by headset microphones. It also protects the microphone element from dirt and moisture. The windscreen should be washed regularly to maintain hygiene and avoid clogging. Wash in warm water and mild soap. Rinse thoroughly and make sure it is completely dry before putting it back on.

To remove the windscreen, take out the screw that holds the microphone on the boom and grasp the windscreen lightly along its entire length and slip it off.

Put the windscreen on the microphone by gently pulling from the open end. Do not pull it so tightly that it stretches against the end of the microphone.

### WARRANTY

Your headset is covered by a limited five-year parts and labor warranty. Please see the enclosed warranty card for details.

You may refer to the parts list on the reverse side, if you choose to replace parts yourself. The parts list describes parts for this particular headset only. Parts lists for other models are available on our Web Site or can be obtained by contacting Sigtronics Corporation.



Sigtronics Corporation  
178 East Arrow Highway  
San Dimas, CA 91773  
**Phone:** 909 305-9399  
**E-mail:** info@sigtronics.com  
**Web Site:** www.sigtronics.com

# Model S-65Y Headset Instructions

The S-65Y series headsets are adjusted at the factory for immediate use with all current standard radio systems in general aviation aircraft. Headsets equipped with two plugs are the standard configuration. The headphone plug is the larger diameter plug and should be inserted into the headphone jack (.250" standard monaural jack). The mic plug is the smaller diameter plug and should be inserted into the microphone jack (.206" standard microphone jack).

The headband is adjustable through a full range of motion, or the locking nuts may be tightened to allow you to custom fit the headset. Place the headset over your head, adjust the slides up until minimum pressure is felt on the top of your head. The headset is now properly adjusted. For maximum noise attenuation, the clamping pressure has been set at the factory. Releasing the clamping pressure by bending the headband is not advised, because loss of attenuation will result. **Note:** If an especially large headband is needed, it may be ordered from Sigtronics.

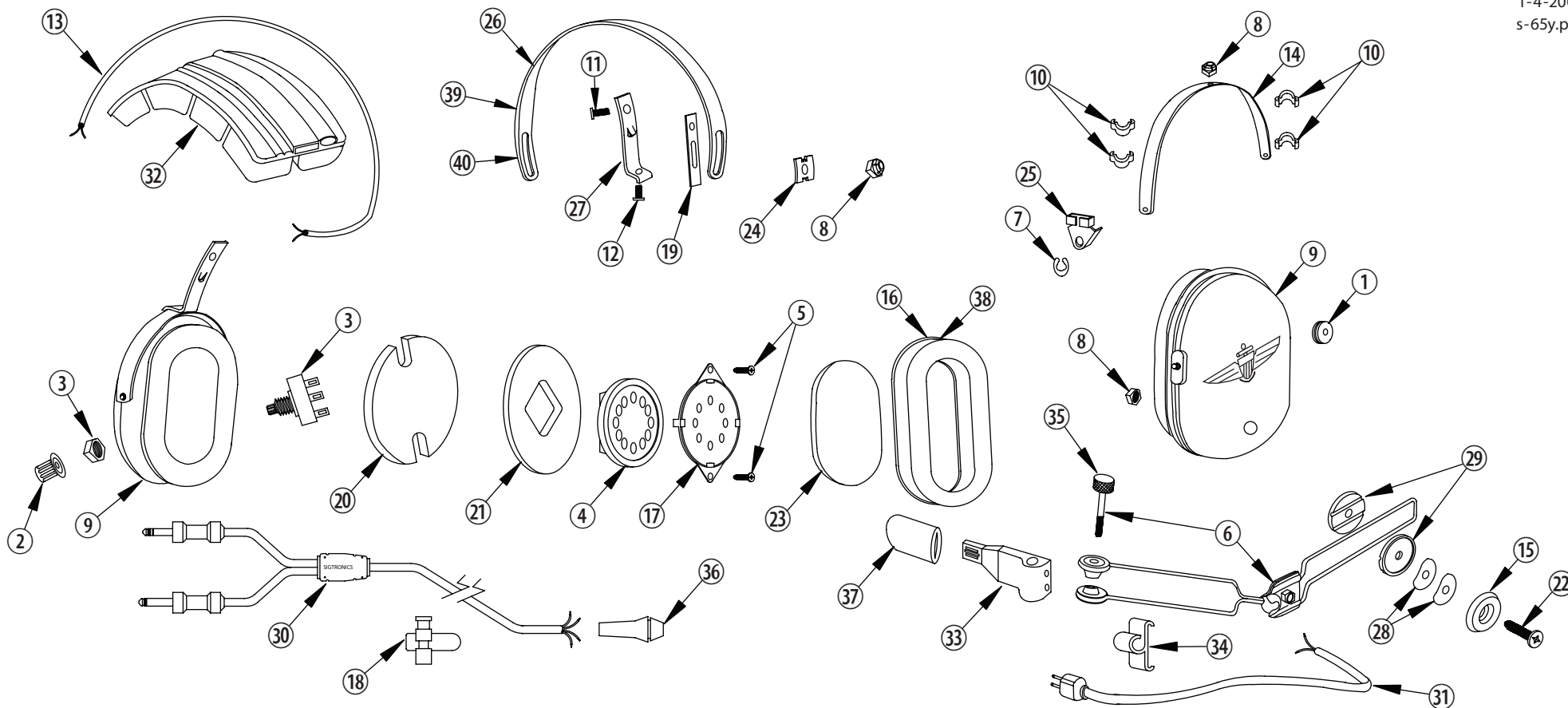
The microphone boom is fully adjustable and will rotate 360 degrees for use on the left or right side of the head. The locking screw that secures the boom to the ear cup is factory set to insure the correct tension. Turning it will not change the tension, because the nut on the inside of the cup will turn as well. **Microphone placement should be at the corner of the mouth, approximately 1/4" from the lips.** The exclusive thumbscrew on the mic boom may be used to assure proper adjustment.

When you first connect the headset, turn the volume control on the headset up to the full clockwise position, then adjust the listening volume with the audio control of either your radio or intercom as appropriate. Passengers should also turn their individual headset volumes up fully. Doing this allows for a full range of adjustment for each passenger, since those with the most acute hearing can turn their headset volume down, if necessary.

continued on back...



**...when it counts!**



### SIGTRONICS S-65Y HEADSET PARTS IDENTIFICATION BREAKDOWN

ITEM	P/N	DESCRIPTION	ITEM	P/N	DESCRIPTION
1	100049	GROMMET, 5/16 INCH, RUBBER	21	100376	FOAM, SOUND ATTN. REC HOLE, 1/2 INCH
2	100360	KNOB, HEADSET VOLUME	22	100523	SCREW, 8-32 X 5/8, PHILLIPS HEAD
3	100365	POTENTIOMETER, 2K	23	100379	FOAM, SOUND ATTN. REC COVER, 1/4 INCH
4	100079	RECEIVER, 300 OHM, MONO	24	100258	CLIP, HEADBAND GUIDE, PLASTIC
5	100108	SCREW, 4-40 X 1/4, THREAD FORMING	25	100393	CLIP, ANTI-ROTATION, YOKE, PLASTIC
6	100525	BOOM, ELECTRET MICROPHONE SUPPORT, SWIVEL	26	100514	HEADBAND, METAL, SHORT
7	100520	E RING, EARCUP TO YOKE RETAINER	27	100516	BRACKET, YOKE SUPPORT W/TANG
8	100524	NUT, HEX, 8-32, LOCKING	28	100385	WASHER, SPRING, BOOM ADAPTER
9	100526	EARCUP, PRINTED AND DRILLED, MIC & NON MIC SIDE	29	100408	WASHER, GROOVED BOOM
10	100362	CLIP, CROSS-OVER, WIRE, PLASTIC	30	800036	CABLE, HEADSET
11	100522	SCREW, 8-32 X 1/2, PHILLIPS HEAD	31	800039	CABLE, MIC BOOM, 12 INCH
12	100521	SCREW, 8-32 X 3/8, PHILLIPS HEAD	32	800146	HEADBAND, W/FOAM FILLED CUSHION
13	100366	WIRE, 2 CONDUCTOR, #24, BLACK, 28 INCHES	33	800078	MICROPHONE, ELECTRET, M-90
14	100515	YOKE, EARCUP MOUNT	34	100371	MIC CABLE CLIP
15	100368	KNOB, MIC BOOM ADAPTER, PLASTIC	35	100532	SCREW, THUMB, MIC BOOM, 2-56 X 1
16	100369	EAR SEAL, FOAM FILLED	36	100569	STRAIN RELIEF, CABLE
17	100370	RECEIVER MOUNT, HEADSET	37	900084	MIC MUFF, (WIND SCREEN)
18	100579	CLIP, CLOTHING, HEADSET CABLE	38	100402	EAR SEAL, GEL FILLED
19	100373	SLIDE, YOKE BRACKET, LONG, NYLON	39	100673	HEADBAND, METAL, CHILD
20	100374	FOAM, SOUND ATTN. NOTCHED, 1/2 INCH	40	100674	OPTIONAL - HEADBAND, METAL, LONG